

LIMU

LUXURY RESIDENCES

Limu Luxury Residences is a sophisticated residential concept that successfully combines the luxury, architectural trends, and comfort that your new lifestyle demands. Live extraordinary experiences surrounded by incredible surroundings and exclusive amenities that will allow you to enjoy the nature of its environment.

# PENÍNSULA RESIDENCES

## EXPERIENCE THE LUXURY OF THE EXTRAORDINARY

A renowned name in the real estate field. Their experience allows them to create spaces that combine the great virtues of architecture and design, exploring privileged environments in residential, corporate, and commercial realms to offer perfect settings.



VIANTO / CIRCUNVALACION AMERICAS, GUADALAJARA

# ARSENI VARABYEU

## CREATIVITY AND STYLE IN EVERY STROKE

Founder and director of the firm Varabyeu Partners, Arseni has over 15 years of experience in bringing life and emotion to forms, with developments that bring aesthetics to different urban and maritime atmospheres. His international recognition makes his work synonymous with assurance in avant-garde and methodically flawless projects.



AMANCAY / NUEVO VALLARTA, NAYARIT



CONGRESS HALL / MINSK, BELARUS

# PUERTO VALLARTA

## MAGICAL DESTINATION

Located on the privileged coast of the Mexican Pacific, Limu Luxury Residences is just a few steps away from the sea and the iconic Peninsula Plaza, which features exclusive shops and the most exquisite gourmet restaurants in the area.



PUERTO VALLARTA CATHEDRAL / DOWNTOWN, PUERTO VALLARTA

# LIMU

LUXURY RESIDENCES



All materials, dimensions, and plans are approximate. Information is subject to change without prior notice. The plans are not to scale; actual usable floor space may vary on the plans. The developer reserves the right to make revisions to the floor plans.



INTERNATIONAL AIRPORT

PLAZA GALERIAS

MARISCOS 8 TOSTADAS

HOSPITAL JOYA MARINA

MONKEY BUSINESS VALLARTA

PORT ADMINISTRATION PUERTO VALLARTA

MCCARTHY'S IRISH PUB

STARBUCKS

PLAZA PENINSULA

PORFIRIO'S

LA ISLA SHOPPING VILLAGE

PENINSULA PUERTO VALLARTA

CHICABAL SUNSET CLUB "PACIFIC OCEAN"

LA SANTA

LA VACA ARGENTINA

PLAZA CARACOL

LA MADALENA



# WHERE TRANQUILITY REIGNS

Puerto Vallarta had not experienced a similar project; one in which each piece fit in a spectacular way; giving prominence to every resident, in a perfect, unique, and exclusive setting.  
An unique space that maintains the perfect balance between nature, architecture, innovation, and luxury to live all your dreams. Freedom in authentic harmony.



All materials, dimensions, and plans are approximate. Information is subject to change without prior notice. The plans are not to scale; actual usable floor space may vary on the plans. The developer reserves the right to make revisions to the floor plans.



# LUXURY, ELEGANCE AND COMFORT

BAR

Ideal environment to leave the routine behind and celebrate the night, enjoy incomparable views accompanied by a cocktail. Top-notch design, warm and fun atmosphere.



GYM

Take care of yourself with the most advanced technology in cardio and resistance equipment from the TechnoGym brand. Carry out your workout routines without leaving home every day. Tone your body and get active at your own pace. Make exercise a daily routine and stay in shape.



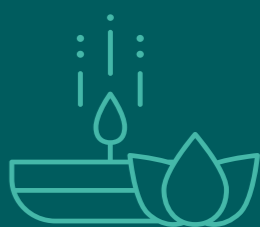
POOL

An area where leisure, socializing, and relaxation are fully enjoyed under the city's sun. Experience a relaxing afternoon from the comfort of your home.



SPA

Take your lifestyle to another level and let the soothing effect of the exclusive spa in your residence help you maintain the balance you need. Disconnect from the routine and free yourself from the stress of daily hustle. Give your body a break and live fully.





## BUSINESS CENTER

Enjoy a sophisticated space with the perfect atmosphere to close your deals. Working from home with the luxury and design you need is possible at Limu Residences.



## PLAYROOM

A fun, colorful, and safe space for little ones, where they will find activities and educational materials that will allow them to develop their skills while having incredible moments.



## GAME ROOM

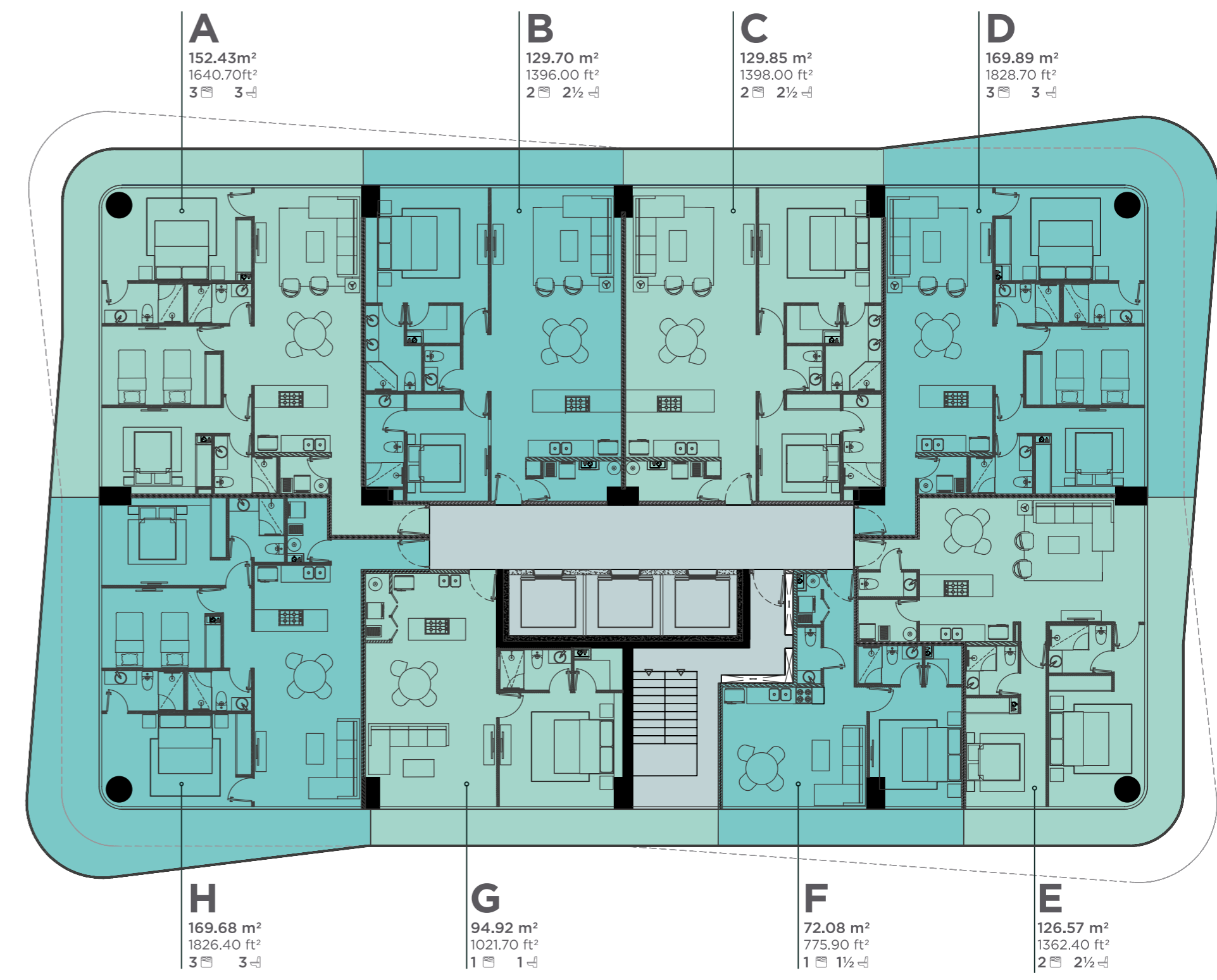
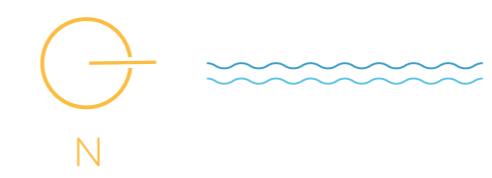
The perfect place for the little ones in the house, where they can play and have fun while improving their physical coordination, strength, and flexibility through play and recreation.



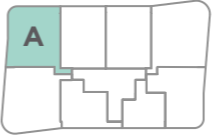
## MULTIPURPOSE ROOM

A large space designed to warmly welcome its residents and visitors, featuring separate areas, luxurious finishes, controlled access with cutting-edge technology, making this project one of the most sophisticated in Puerto Vallarta.







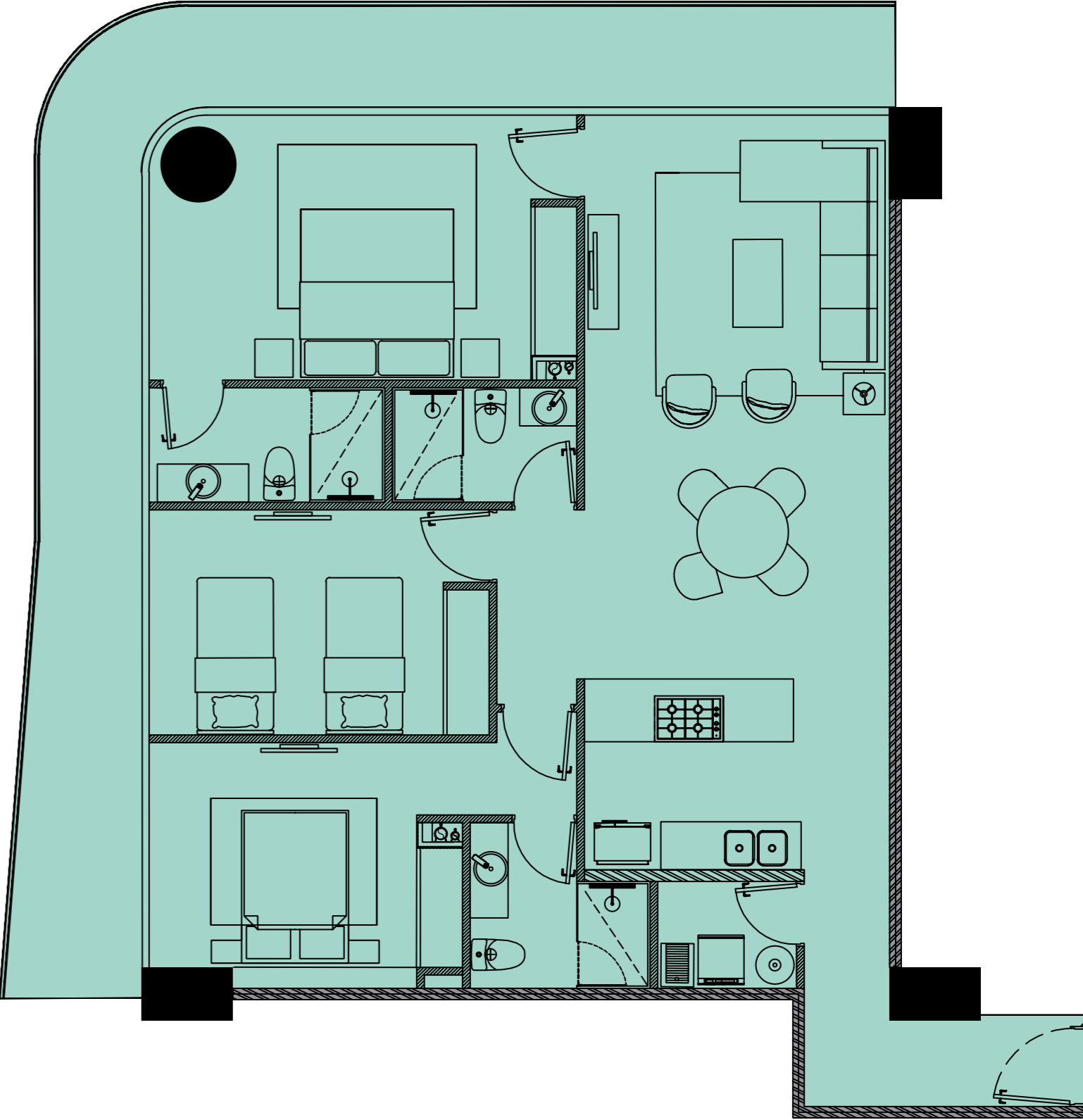


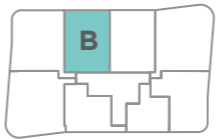
This floor plan is representative of levels 17-21; all materials, dimensions, and plans are approximate. Information is subject to change without prior notice. The plans are not to scale; actual usable floor space may vary on the plans. The developer reserves the right to make revisions to the floor plans.



**A**  
152.43m<sup>2</sup>  
1640.70ft<sup>2</sup>

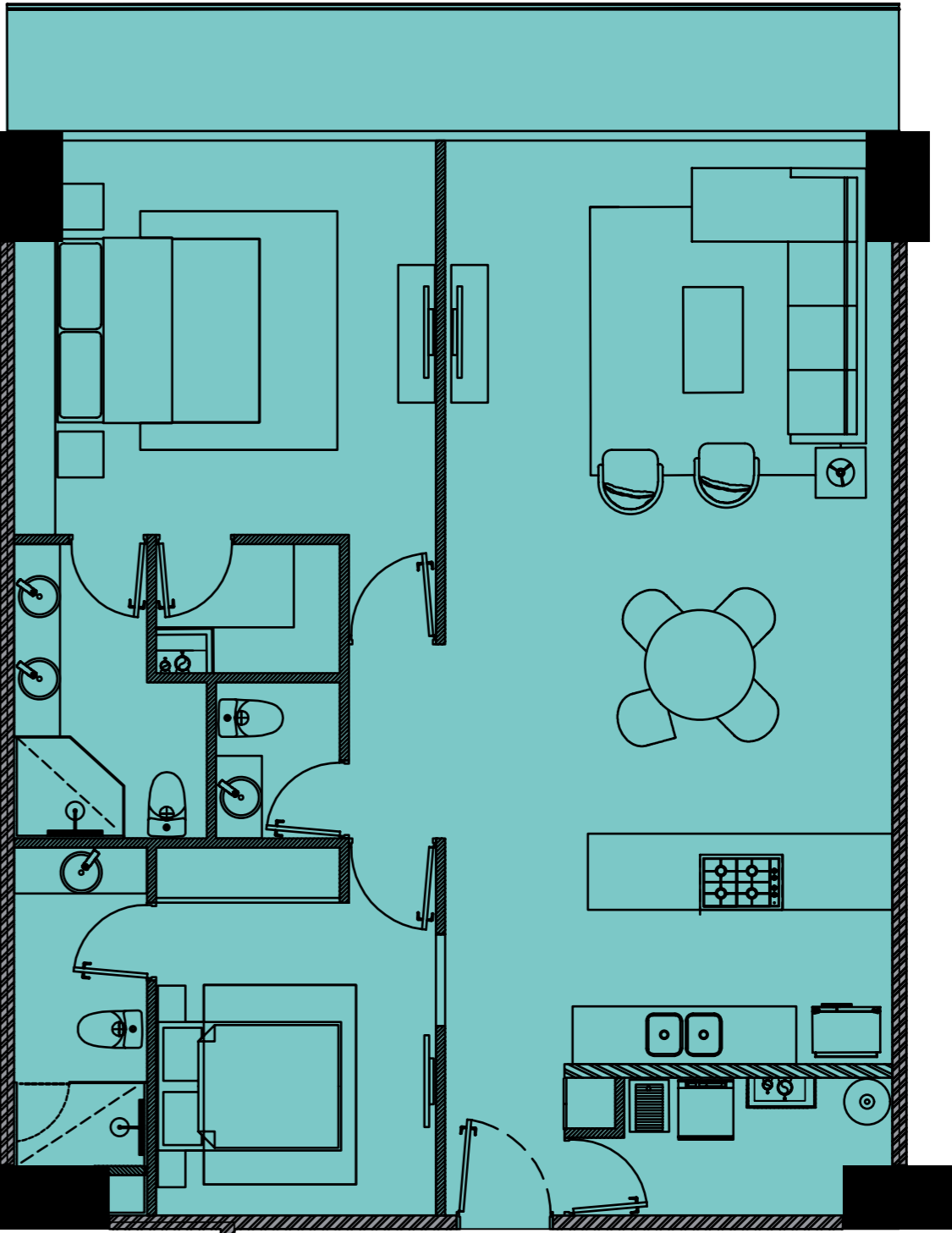
-  3 Bedrooms
-  3 Bathrooms
-  Living room
-  Dining room
-  Kitchen
-  Laundry room

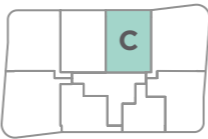




**B**  
129.70m<sup>2</sup>  
1396.00ft<sup>2</sup>

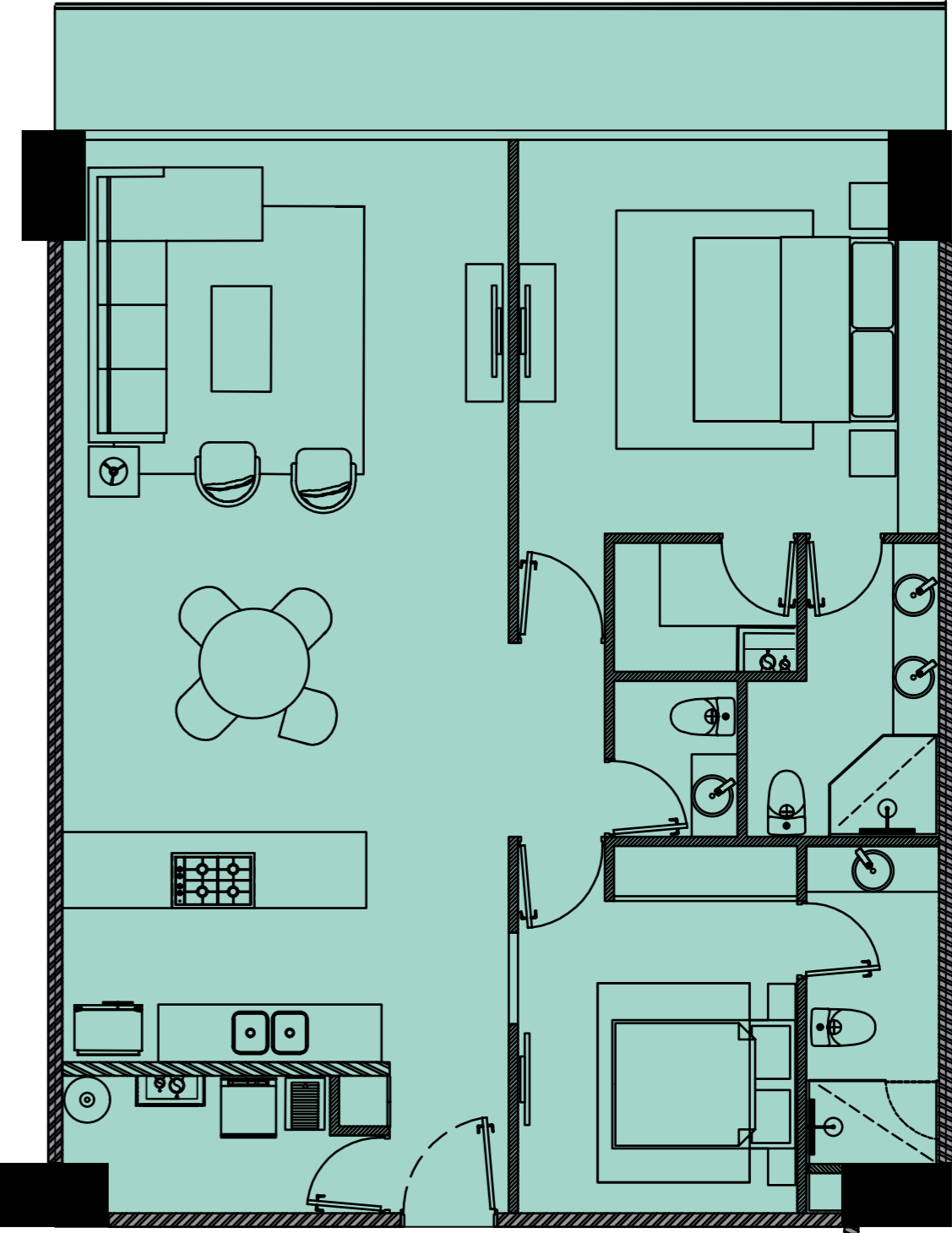
- 2 Bedrooms
- 2 ½ Bathrooms
- Living room
- Dining room
- Kitchen
- Laundry room

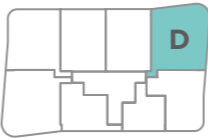




**C**  
129.85m<sup>2</sup>  
1398.00ft<sup>2</sup>

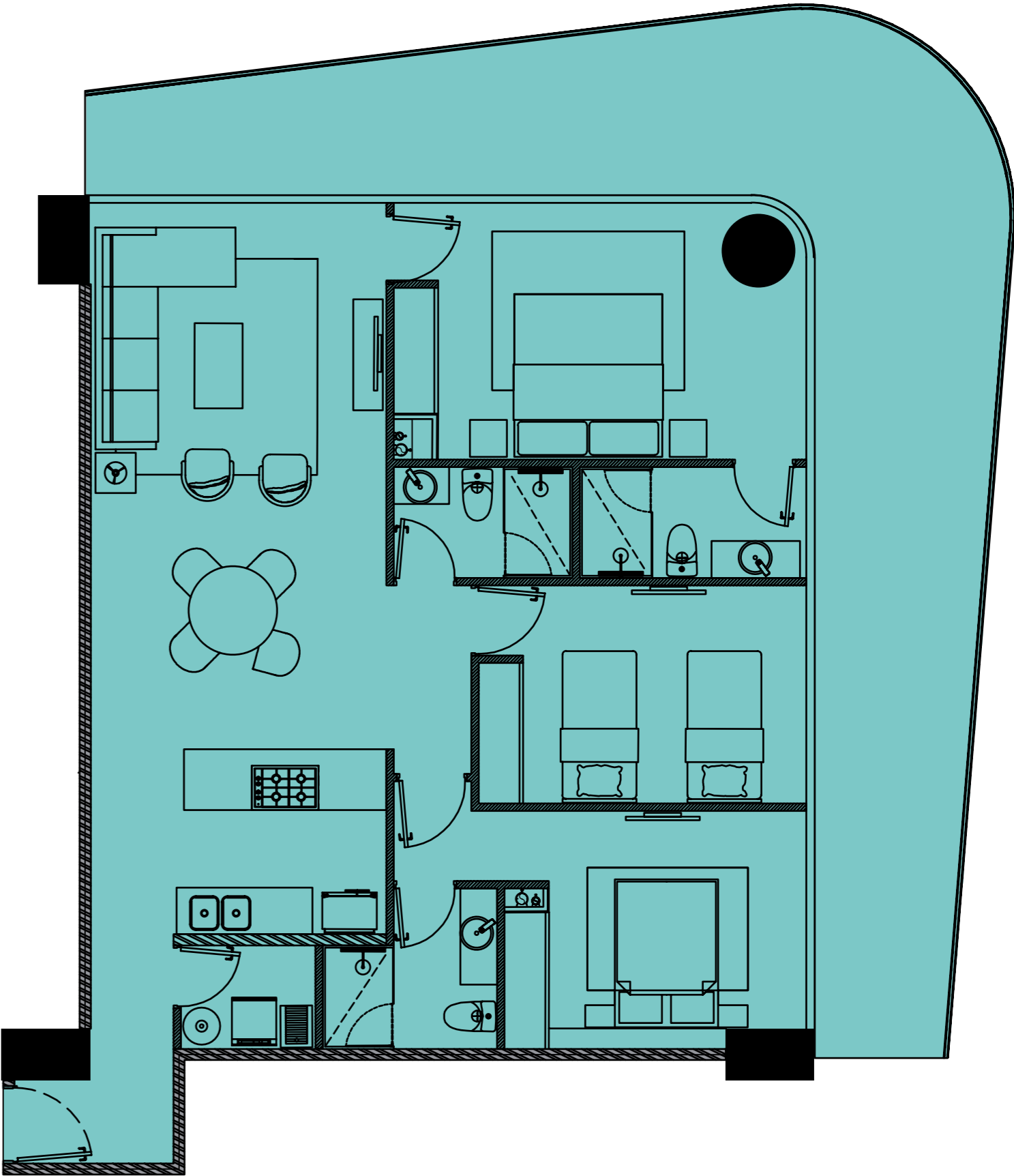
- 2 Bedrooms
- 2 ½ Bathrooms
- Living room
- Dining room
- Kitchen
- Laundry room





**D**  
169.89m<sup>2</sup>  
1828.70ft<sup>2</sup>

- 3 Bedrooms
- 3 Bathrooms
- Living room
- Dining room
- Kitchen
- Laundry room





All materials, dimensions, and plans are approximate. Information is subject to change without prior notice. The plans are not to scale; actual usable floor space may vary on the plans. The developer reserves the right to make revisions to the floor plans.

# LIMU

Blvd. Francisco Medina Ascencio N. 2485  
Zona Hotelera, Puerto Vallarta, Jal. MX.

☎800-9533-800

[limuresidences.mx](http://limuresidences.mx)



A PROJECT BY:

